

**Your Single Point Source
Construction & Development Partner**



HAI-CON - Your Single-Source Construction & Development partner.

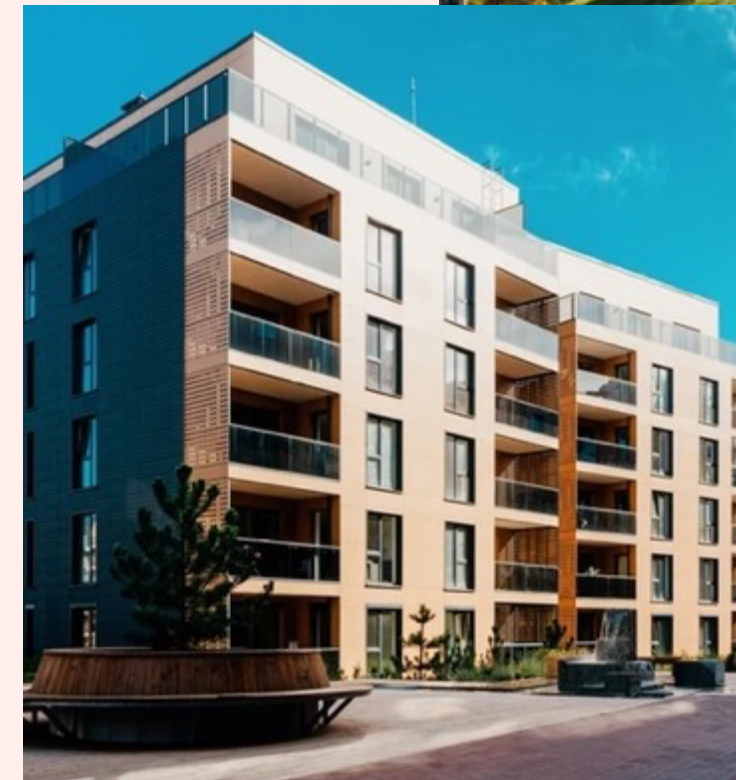
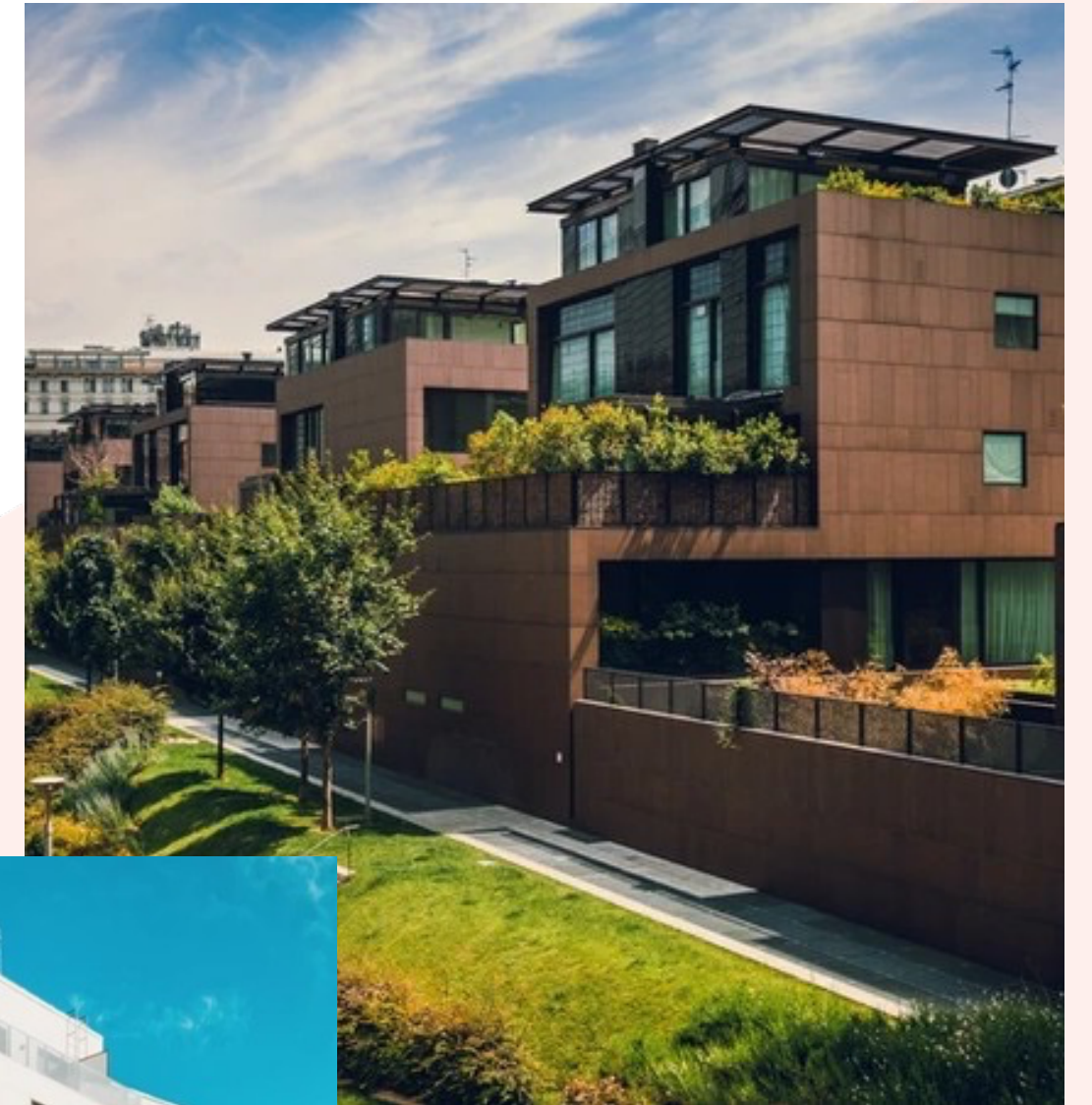
We are your Single-Source Construction, Real Estate Development, and Predevelopment Consulting Partner. HAI-CON is a focused General Contractor who also operates as a real estate development and consulting solutions group specializing in turnkey mixed used, hospitality, multifamily, and commercial development and construction of Design-Build and Design Bid-Build projects. Our tenured team has helped maximize returns in multifamily mixed-use market rate apartment housing, student housing, seniors housing, hotels, restaurants, and single-family developments of work force housing communities across the country. Leveraging our deep-rooted industry connections and the invaluable partnerships that have been cultivated over the past 30+ years allows us to quickly identify, evaluate and act on opportunities for investment or acquisition, effectively and efficiently develop Class A communities in strategic locations, and provide a boutique management of the assets.

Mission - To build remarkable living and working marque style projects, which transform and elevate the way people live and work that are environmentally self-sustaining through the use of existing and newer technologies

Who We Are

Over the past 30+ years, our founder has pioneered and cultivated lasting relationships that enable our strong team of affiliated trade partners to bring their considerable expertise to bear for our project partners and clients.

The goal-oriented mentality of our team keeps us focused on sustainable growth objectives, despite market fluctuations, and keeps us agile so that we can adjust where and when changes are needed to maintain profitable returns. Blending our industry-leading innovation, data-driven insights, and a legacy of Honesty, Accountability, and Integrity, we strive to be the team you want to partner with — that's our promise. That is HAI-Con Group.



Capabilities

Consulting Services

- **Entitlement Services:** Navigating through complex zoning and land use permissions to ensure project viability.
- **Owner's Representative:** Acting as the client's advocate to ensure project objectives are met with optimal solutions.
- **Pre-Construction Analysis of Plans (Peer Review):** Offering expert review to identify potential issues before they become problems.
- **Initial High-Level Budgeting of Projects:** Providing early project cost estimations for better financial planning.
- **Final Hard Bid Budgeting of Projects:** Delivering precise budgeting based on detailed project specifications.
- **Project Schedules:** Utilizing MS Project to develop comprehensive, realistic timelines for project completion.
- **Quantitative Piece Count Takeoffs:** Using Plan Swift for accurate material and labor estimates across all divisions.

Construction Services

- **Design-Build:** Streamlining project delivery through a single contract with Hai-Con, facilitating faster completion with integrated design and construction services.
- **Design Bid Build:** Offering traditional project delivery methods that separate design and construction phases for projects.
- **Full-Service Construction:** Providing comprehensive construction management from the ground up, ensuring quality, efficiency, and safety.

Project Take Offs

REQUEST FOR PRICING

HAI Construction & Estimating

Cartersville GA, 32120
 Phone: (678) 699-6190
 Fax:
 Prepared By: Larry Watkins

QUOTE #:	2022-0207 Peaks
CUSTOMER ID:	1
VALID UNTIL:	30 Days

Division: Div 01 - General Requirements	Qty	Units
Cost Code: 01-000 - Unit Counts		
Unit Count - Type 1 (1 BR;1 Bath)	2	
Unit Count - 3 BED ADA (3 BR;2 Bath)	2	
Unit Count - 3 BED (3 BR;2 Bath)	10	
Unit Count - 2 BED ADA (2 BR;2 Bath)	3	
Unit Count - 2 BED (2 BR;2 Bath)	33	
Unit Count - 1 BED ADA (1 BR;1 Bath)	2	
Unit Count - 1 BED (1 BR;1 Bath)	8	
Cost Code: 01-000 - Gross Square Foot		
Area - Heated Square Foot	1113	
Area - Gross Square Foot	12434	
Division: Div 02 - Site Construction	Qty	Units
Cost Code: 02-850 - Termite Treatment		
Soil Pre-Treatment	29592	SF
Division: Div 03 - Concrete	Qty	Units
Cost Code: 03-001 - Concrete Subcontract		
MASA Strap	1302	EA
Concrete	798	CU YD
4" Gravel	745	Ton(s)
2x10 Forms	142	EA
15 mil Vapor Barrier	9	Roll(s)
#4 Rebar	56607	LBS
Concrete Labor	37294	FT
Division: Div 04 - Masonry	Qty	Units
Cost Code: 04-200 - Masonry Units		
Sand	4	Ton(s)
Mortar	23	Bag(s)
8"W x 8"H x 16"L CMU Block (Trash Enclosure)	687	Block(s)
4"W x 8"H x 16"L CMU Block (Trash Enclosure)	77	Block(s)

QUOTE #:	2022-0207 Peaks
CUSTOMER ID:	1
VALID UNTIL:	30 Days

Division: Div 04 - Masonry	Qty	Units
Cost Code: 04-200 - Masonry Units		
26" W x 16" L Precast Pillar Cap	2	EA
#4 Rebar	171	LBS
Pillar Cap Labor	2	EA
Block Labor	9	Hour(s)
Cost Code: 04-100 - Masonry Subcontractor		
Wall Ties	25	Box(s)
Mortar	919	Bag(s)
Mason Sand	128	Ton(s)
3" D x 2.75" H x 7.62" L Queen Brick	127780	Brick(s)
2nd Weather Barrier	15	Roll(s)
Brick Labor	20108	SQ FT
Division: Div 06 - Wood and Plastics	Qty	Units
Cost Code: 06-251 - Siding Subcontractor		
9.25" W X 12' L - Fiber Cement Boards - Woodgrain,	3741	Piece(s)
7.25" W x 12' L 5/4 Fiber Cement Trim - Primed Smooth Finish	13	Pcs.
5.5" W x 12' L 5/4 Fiber Cement Trim - Primed Smooth Finish	625	Pcs.
5.5" W x 12' L 4/4 Fiber Cement Trim	389	Pcs.
4' W x 8' L - Fiber Cement Panels	466	Panel(s)
3.5" W x 12' L 5/4 Fiber Cement Trim - Primed Smooth Finish	503	Pcs.
3.5" W x 12' L 4/4 Fiber Cement Trim	870	Pcs.
2nd Weather Barrier	38	Roll(s)
24" W x 8" L - Fiber Cement Soffit - Solid, Smooth, Primed	172	EA
2" Coil Nails	19	Box(s)
16" W x 12' L - Fiber Cement Soffit - Solid, Smooth, Primed	3	EA
15.25" H x 48" L - Fiber Cement Shingle Siding	53	Square(s)
12" W x 12' L - Fiber Cement Soffit - Solid, Smooth, Primed	46	EA
11.25" W x 12' L 5/4 Fiber Cement Trim - Primed Smooth Finish	329	Pcs.
1.25" W x 2" L Fiber Cement Brick Mould	39	Pcs.
Trim Labor	31614	FT
Soffit Labor	1962	FT
Shingle Siding Labor	4693	SQ FT
Panel Siding Labor	14555	SQ FT
Lap Siding Labor	29872	SQ FT
Cost Code: 06-200 - Finish Carpentry Materials		
Baseboard Material	1740	Piece(s)
Cost Code: 06-101 - Rough Carpentry Sub		
Subfloor Labor	38558	SQ FT
Header Labor	663	EA
Framing Labor	1716	Hour(s)

QUOTE #:	2022-0207 Peaks
CUSTOMER ID:	1
VALID UNTIL:	30 Days

Division: Div 10 - Specialties	Qty	Units
Cost Code: 10-240 - Fire Extinguishers		
5.0 # ABC Extinguisher	89	EA
		791,852.38

Our Work

Mixed-Use Developments:

- Houston, Texas: A multi-story development with 301 apartments and a 545-space parking garage.
- Greenville, South Carolina: A 6-story, 365-apartment complex with a 528-space parking garage.

Multi-Family / Student Housing Developments:

- Panama City, Florida: 220-unit market-rate apartment complex.
- Knoxville, Tennessee: 300 units designed for market-rate housing.

Healthcare / Assisted Living Developments:

- Knoxville, Tennessee: A new 250,000 sq. ft. healthcare facility.
- Nashville, Tennessee: A modern healthcare development spanning 7,500 sq. ft.



Our Work Cont.



General Commercial Developments:

- Chattanooga, Tennessee: 175,000 sq. ft. of new commercial space.
- Birmingham, Alabama: An 85,000 sq. ft. commercial project.

Restaurant Developments:

- Roswell, Georgia: New wood frame construction for an 18,000 sq. ft. space.
- Gadsden, Alabama: Construction of a 26,000 sq. ft. dining establishment.

Hospitality Developments:

- Atlanta, Georgia: A 300-bed facility reflecting modern comforts.
- Baton Rouge, Louisiana: A new 120-bed hospitality project.

Retail Developments:

- Across FL, GA, SC, NC: Multiple new CMU & Steel Construction projects, each 10,100 sq. ft. per store.
- Throughout FL, GA, NC, SC: 17 new all-metal construction retail stores.



Next Steps

Thank you for joining us on this journey through Hai-Con Group's vision, services, and legacy of success. Now, let's pave the way forward together.

Partner with Us:

- For collaboration inquiries and to discuss your next groundbreaking project.
- To leverage our three decades of expertise for your development and construction needs.

Contact Hai-Con Group:

- Phone: 678-699-6190
- Email: LarryW@Hai-ConGroup.com

Connect with us today and take the first step towards transforming your vision into reality with Hai-Con Group — where innovation meets execution.

****Hai-Con Group primarily serves the Southeast region, but our operations are flexible and with sufficient notice, we are equipped to deliver our high-quality construction and consulting services across the United States****